

Doug & Phyllis Copp
P O Box 517
Ashdown, AR 71822-0517
Email: dpcopp67@yahoo.com

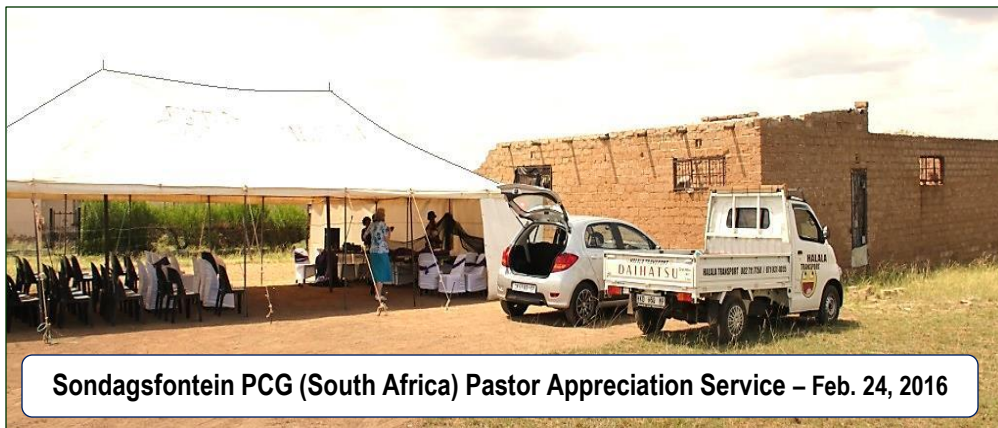
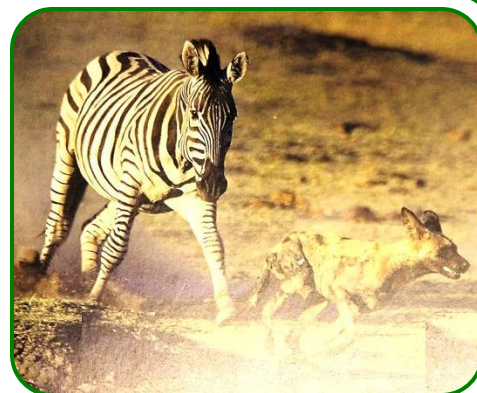
ZEBRA STRIPES

SPRING 2016

One man of you puts to flight
a thousand, since it is the Lord
your God who fights for you,
just as He promised you.

Joshua 23:10 (ESV)

(Photo: Zebra chasing away a wild dog)



Sondagsfontein PCG (South Africa) Pastor Appreciation Service – Feb. 24, 2016



SOUTH AFRICA MINISTRY TOUR: February 20th thru March 9th we visited Mpumalanga & Gauteng Provinces in South Africa. Within that time frame (plus all the miles we traveled), we were privileged to participate in 14 church related functions, this included: a pastoral appreciation service at Sondagsfontein, a wedding in Middelburg, and a church dedication at Dindela (Munsterlos). Other activities included regular church services as well as attending several prayer cell groups.

High winds in December 2015 destroyed the Sondagsfontein's church roof. Thankfully, a donor helped us with funds to purchase galvanized sheets and other building supplies (see photo above right).

Left Photo: Elias & Eugenia Tlou, Pastors of Dindela PCG. Brother Elias has done a wonderful work building up the congregations at both Bethel and Dindela.



Phyllis speaking at PCG Dindela (Munsterlos) church dedication on March 5th. Many thanks to family & friends who assisted on this special project



Thabo & Beulah were married on Feb. 27th in Middelburg

2016 Spring Greetings!

MEDICAL MISSIONS TRIP: May 24 - June 5th, 2016 we will be hosting another Medical Missions Team to Malawi's Lower Shire Valley. As a result of the 2014 medical team visit, seven new congregations were added to PCG Malawi. This year the team includes 2 nurses, Angie & Mattie Norris (mother & daughter) from St. Louis; also accompanying us is Dr. Ronica (Chittigado) Ganas from Krugersdorp, South Africa and of course, several Malawi pastors will assist the team and act as translators. **NOTE:** Bro & Sis Copp still need funds for their part of trip expenses. Any contribution is welcome...but, **please remember to earmark your check for account #4713** when sending to the World Missions Department. Your prayers are also very much appreciated!



Praise the Lord! A Missouri church assisted on the property purchase for the above plot near Jesus Worship Center, Malawi. The 1st down payment has been made to the owner. Usage: Children's Feeding Program, Pastoral Training dorms, other.

Very recently, Malawi experienced a severe drought. Here children are fed porridge thanks to the World Missions Department for their help on this much needed project.

NOTE OF THANKS ...

To our CA friends (W. & A. R) who contributed toward our airline tickets for the Feb-March South Africa ministry tour. It was just enough!

To individuals and churches who have been faithful to send missions offerings for us to World Missions Dept. This has GREATLY helped us offset costs of this year's ministry tours and special projects.

CONTACT US FOR DETAILS ON SPECIAL PROJECTS THAT URGENTLY NEED SPONSORS

National Offices for Zimbabwe & Democratic Republic of Congo North (\$5000 - \$6000 each)

Send Your Designated Contributions to:

**World Missions Department
P.O. Box 211866
Bedford, TX 76095**

*South African Proverb
Every river has its own frogs.*

Meaning: Every community has its own problems.

***Pastors, Thank you for posting our
newsletter on your church's bulletin board.***